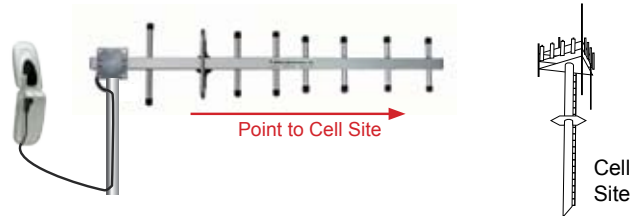


ADDENDUM • IN-BUILDING WIRELESS INSTALLATION GUIDE

STEP 1 Outside Antenna Location and Positioning

See Yagi installation instructions for more details.

Find a location on the roof to mount the Yagi antenna that points toward the Cell Site and AWAY from the building.



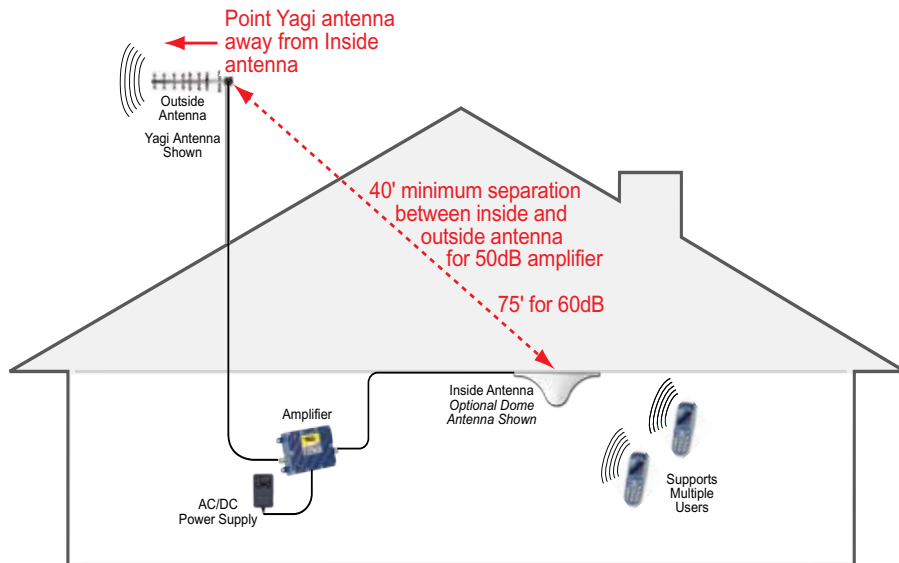
STEP 2 Amplifier Location

Choose a location for the amplifier away from excessive heat, direct sunlight, moisture, and with proper ventilation. The amplifier should be mounted near a power outlet.

DO NOT POWER AMPLIFIER UNTIL INSIDE AND OUTSIDE ANTENNAS ARE CONNECTED TO AMPLIFIER.

STEP 3 Coax & Antenna Separation

Connect outside antenna to the amplifier with 9913 coax or equivalent. Place the inside antenna in the area needing amplified signal. It is important to have at least 40' of separation between inside and outside antennas for 50dB amplifiers and at least 75' separation distance for 60dB amplifiers.



STEP 4 Inside Antenna Location

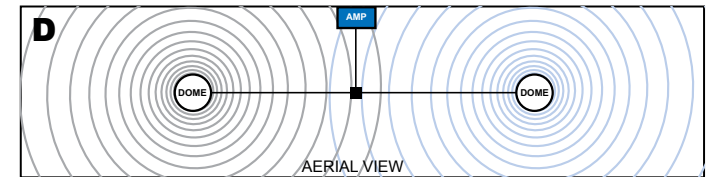
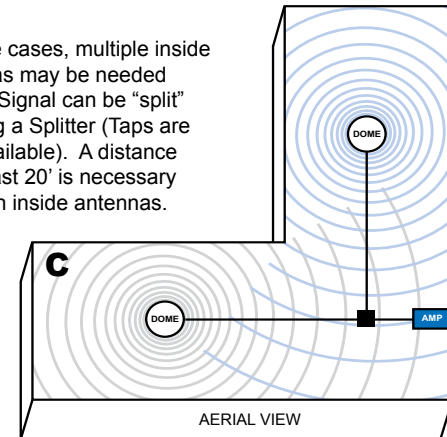
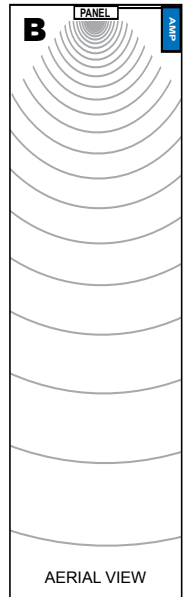
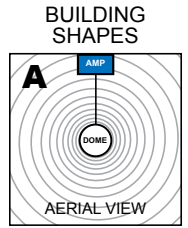
Find a suitable location for the inside antenna.

Wilson has many antenna options. The Dome and Panel Antennas are the most popular for inside building applications.

For a square room, a Dome Antenna will provide better coverage. (A)

For a rectangular room, a Panel Antenna will provide better coverage. (B)

In some cases, multiple inside antennas may be needed (C&D). Signal can be "split" by using a Splitter (Taps are also available). A distance of at least 20' is necessary between inside antennas.



STEP 5 Connecting Amplifier to Inside Antenna

Connect coax from amplifier to inside antenna. For distances 20' or more use 9913 coax or equivalent to prevent significant signal loss.

STEP 6 Install Mode

Move switch that is next to the outside antenna port to the **INSTALL MODE** position. Plug power source into wall outlet and carefully into amplifier so as not to damage the center pin.

CAUTION: Use only the power supply provided in this package. Power supply must be 6V DC



STEP 7 Turn Cell Phone(s) Off During Install Mode

Turn off all cell phones within 50' of inside antennas. The amplifier is equipped with sensitive detectors to prevent oscillation (feed back). Cell phones left on could put out extra RF (radio frequency) signals, disrupting the correct installation.

STEP 8 Install Verification

You should now have 5 green lights, if you do not, refer to Install Mode Troubleshooting (next page). If all 5 lights remain green for 2 minutes without blinking, slide the switch to OPERATION MODE position.



STEP 9 Operation Mode Position

All lights should remain GREEN when in OPERATION MODE. If light **D** is off, there is too much signal being received from the cell site. It may be necessary to detune the Yagi by turning it away from the cell site until all lights are GREEN. The amplifier will work at optimum performance with all lights GREEN. If all GREEN lights are on, **INSTALLATION COMPLETE**.

INSTALLATION COMPLETE

If you need further assistance, call Tech Support toll free at 1-866-294-1660 or email us at tech@wilsonelectronics.com.

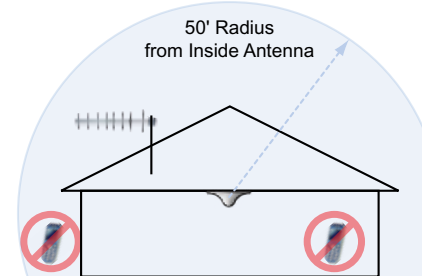
Wilson Electronics, Inc.

3301 E. Deseret Drive, St. George, Utah 84790
For additional technical support go to
www.wilsonelectronics.com
Phone: 1-866-294-1660 Fax: 1-435-656-2432

Install Mode Troubleshooting

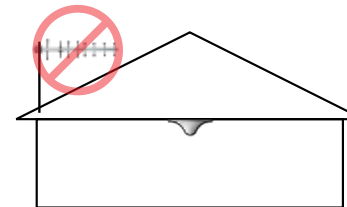
All lights should be GREEN before switching to OPERATION MODE position. When light **A** is RED, refer to the solutions below.

Solution 1



Check that all cell phones are off within 50' of inside antennas. (See step 7)

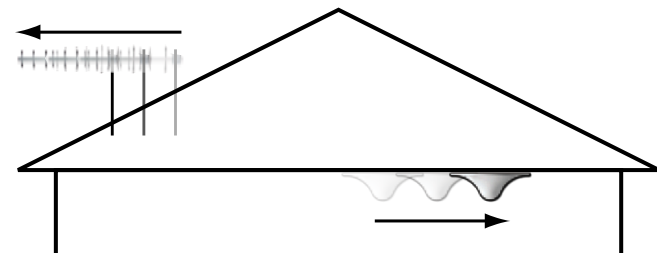
Solution 2



If light **A** is still RED, verify Yagi is pointed away from the inside antenna.

Solution 3

If light **A** is still RED, increase the distance between inside and outside antennas gradually until all lights are GREEN. Distance may be increased either vertically or horizontally.



If light A remains RED, DO NOT switch to OPERATION MODE position. Doing this may cause damage to the cell site. Call Tech Support toll free at 1-866-294-1660